



OUTLOOK



Ready. For Life.



Leadership. Empowerment. Growth

Outlook Expeditions

Outlook was formed in the foothills of Snowdonia in 2001, by a group of passionate enthusiasts who believed in the outdoors and expeditions as a vehicle for building character and increasing resilience.

Since then, we've taken tens of thousands of students on life-changing journeys to over 60 countries on five continents across the world.

? WHY DO WE EXIST?

We help young people get ready for life.

? WHAT DO WE DO?

We create overseas expeditions that deliver inspirational, immersive 'outside the classroom' learning experiences, that accelerate core skills development in young people

On our expeditions, individuals become team players, growing and learning through challenge, developing character, building resilience, and improving wellbeing.

We encourage responsible travel and meaningfully connect young people with the communities their visit, creating global citizens with a keen awareness of the world and their place in it.

? WHAT'S DIFFERENT ABOUT AN OUTLOOK EXPEDITION?

We believe that the real destination is the personal development of a young person.

We don't fit your needs to an 'off-the-shelf' product. Quite the opposite. We listen first, ask questions and listen again to your answers. And then, we carefully craft itinerary and destination solutions that align to your school's and participants' unique needs and wants.

From a 'bag of cash' student-led age-old expedition in Peru, to a more curated activity-driven experience in Malaysia, we co-create expedition journeys with you.



Contents

- 3 Outlook Expeditions
- 5 Why should young people go on an Expedition?
- 5 The '4 Cornerstones' of an Outlook Expedition
- 6 The '4 Cornerstones' - examples
- 7 The Outlook Programme
- 8 How we create an Expedition
- 9,10 Expedition destinations
- 11 An example itinerary - Costa Rica PADI
- 12 The Outlook Journal
- 13 Outlook Leaders
- 14 Pay-Your-Way [self-funding an Expedition]
- 15 Safety & Support
- 16 A handful of student FAQs
- 17 Meet the Outlook Team
- 18 The Outlook Way
- 19 What's included, excluded & payment guide



Why should young people go on an Expedition?

Expeditions allow young people to spread their wings, see and experience a whole new part of the world and discover their true capability.

7 REASONS to take the leap and step outside their comfort zone and achieve more than they ever imagined...

- ✕ Accelerate learning and life-skills development
- ✕ Fund-raising is not just about paying for the expedition - it's a life lesson in learning the value of money, managing it and being accountable.
- ✕ Gain deep understanding of other cultures and global issues
- ✕ Uncover strengths and discover new passions
- ✕ Challenge themselves to meet new like-minded adventurers and create life-long friends
- ✕ Build character, resilience and the confidence to face life's challenges
- ✕ And a helpful stand-out boost to the CV for university and job applications



The '4 Cornerstones' of an Outlook Expedition

Wherever in the world we go on expedition, there will be a rich mix of experiences from which to choose.

And ALL our expeditions will include elements from each of the '4 Cornerstones of an Outlook Expedition'.

We work with your school and expedition team members to understand their needs and wants, and together we co-create an expedition itinerary.

Components of a specific expedition will be dependant upon destination and duration, but will always include some of these examples.



COMMUNITY ENGAGEMENT

- Meet indigenous communities and stay in village homestays
- Take part in service-learning and community projects
- Support conservation and wildlife protection efforts



PHYSICAL CHALLENGE

- Altitude treks
- Jungle treks and camps
- PADI dive qualification
- White-water rafting
- and many more...



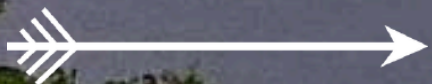
LEADERSHIP

- In-country leadership roles
- Self-leading: budget management; booking transport; finding accommodation; choosing activities; solving problems.
- Leader-In-Me online course



ACTIVITIES / R&R

- Sightseeing
- Jungle camp
- Kayaking
- Cycling
- Beach day
- Horse riding
- and many more...



The '4 Cornerstones' - examples

COMMUNITY ENGAGEMENT: TEA PICKING IN SOUTH INDIA



PHYSICAL CHALLENGE: TREK TO EVEREST BASE CAMP



LEADERSHIP - BUDGETING IN PERU



ACTIVITIES / R&R: KAYAKING IN NORWAY



The Outlook Programme



An Outlook expedition doesn't just start when the plane takes off. It starts the moment a team GOES LIVE!



Starting up to 24 months prior to travel

WEBINARS - LEADER IN ME - OUTLOOK ENTERPRISES - NEWSLETTERS - SOCIAL MEDIA UPDATES - EMAIL NOTIFICATIONS

How we create an Expedition



EXPEDITION DEVELOPMENT

- We send experienced leaders to potential destinations to undertake recces, for both risk assessments and for expedition development.
- We'll check existing and new accommodation, transport, activities, treks, dives and more.
- We're looking at safety and potential safeguarding risks, as well as assessing the level of challenge and enjoyability.

ITINERARY DEVELOPMENT

- We work with school leaders to understand what the school and expeditioners need and want before a booking is made.
- We share example of existing itineraries, but it is not until we have a team that we together create a draft itinerary closely tailored to the expeditioners' needs and wants, in an Outlook Programme workshop we call 'Map Your Journey'.
- We will continue to refine that until issuing a Final Itinerary a month before travel.
- For our Indi Expeditions [i.e. expeditions not connected with a specific school], we use our experience to create a best-in-class itinerary for the independent expeditioners.

Expedition Destinations

The possibilities for adventure and challenge are infinite.



OUTLOOK X Ready For Life.

EXPEDITION GUIDE

Nepal:
Annapurna Base Camp



OUTLOOK X Ready For Life.

EXPEDITION GUIDE

Borneo



OUTLOOK X Ready For Life.
EXPEDITION GUIDE

Malaysia
Turtles

OUTLOOK X Ready For Life.

EXPEDITION GUIDE

Vietnam

OUTLOOK X Ready For Life.

EXPEDITION GUIDE

Monoplia

OUTLOOK X Ready For Life.

EXPEDITION GUIDE

Morocco

OUTLOOK X Ready For Life.

EXPEDITION GUIDE

Laos

OUTLOOK X Ready For Life.

EXPEDITION GUIDE

Tanzania

OUTLOOK X Ready For Life.

EXPEDITION GUIDE

Southern India

OUTLOOK X Ready For Life.

EXPEDITION GUIDE

Botswana

OUTLOOK X Ready For Life.

EXPEDITION GUIDE

Thailand

OUTLOOK X Ready For Life.

EXPEDITION GUIDE

Cambodia

OUTLOOK X Ready For Life.

EXPEDITION GUIDE

10 Ecuador

OUTLOOK X Ready For Life.

EXPEDITION GUIDE

Romania

OUTLOOK X Ready For Life.

EXPEDITION GUIDE

Finland
Summer

OUTLOOK X Ready For Life.

EXPEDITION GUIDE

Norway

Costa Rica - Padi

SAMPLE ITINERARY: 21 DAYS

SEASON: ALL YEAR

[other itinerary options are available for this expedition,
in addition to itineraries for expeditions of varying durations]

Day 1: Depart London and arrive in San José

Day 2: Orientation and preparation in San José

Day 3: Travel to the ASIS Animal Sanctuary

Day 4: Wildlife conservation and service learning at ASIS

Day 5: Continue conservation work and environmental workshops

Day 6: Community engagement and project work

Day 7: Final day at ASIS and reflection session

Day 8: Travel to Rincon de la Vieja National Park

Day 9: Trek through the National Park

Day 10: Continue trekking and wildlife observation

Day 11: Travel back to San José

Day 12: Travel to Cahuita on the Caribbean coast

Day 13: Relaxation and coastal activities

Day 14 to 18 : Begin PADI Open Water diving course

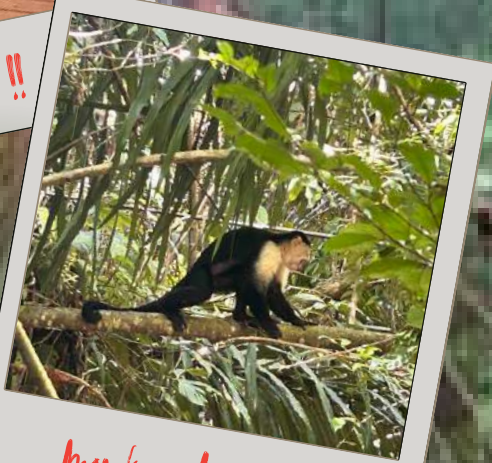
Day 19: Travel to San Jose

Day 20: White water rafting along the Pacuare River-San Martin Section

Day 21: Return flight from San José to London



check the tanks !!



monkey business !

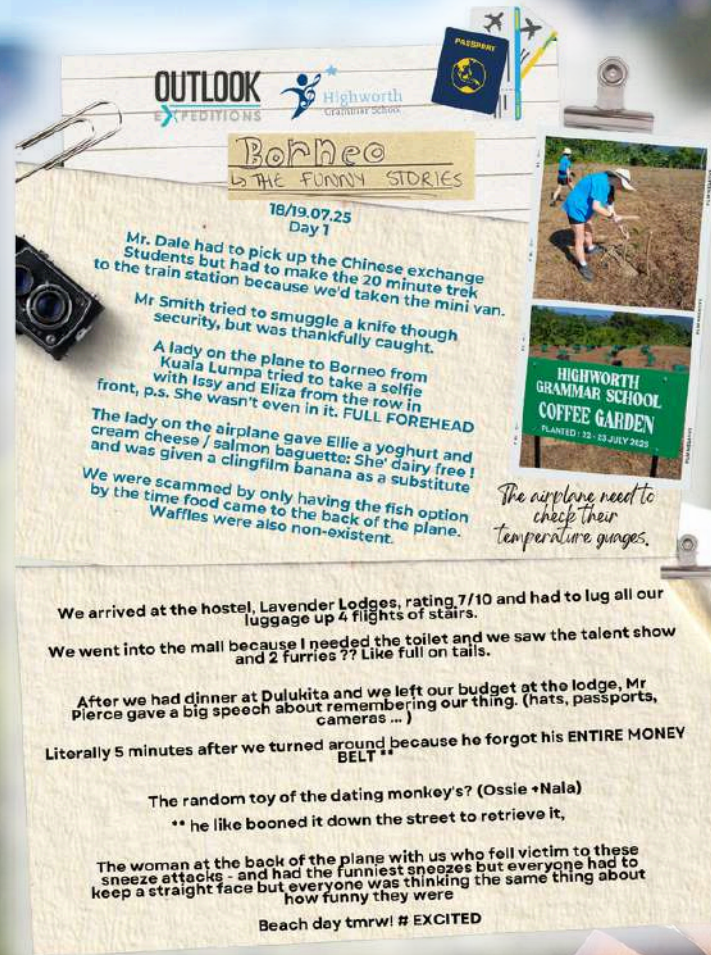
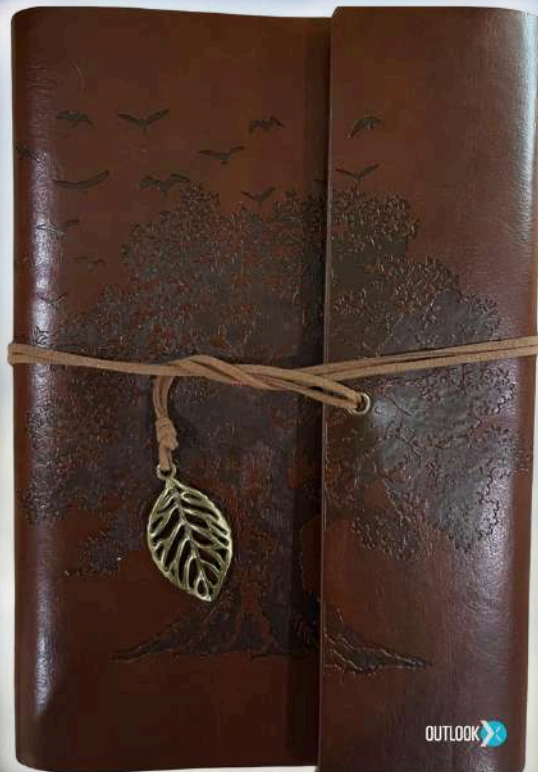


nearly there ?

The Outlook Journal

Every Outlook expedition team is given a travel journal [a real journal, with real paper and real pens!] to capture thoughts, feelings and memories as the journey unfolds. A simple space to reflect on challenges, record standout moments, sketch a monkey or two, and express how the experience is shaping them, whether through writing, sketches or notes shared as a group.

These journals help students slow down, process what they are learning and create a meaningful record of their expedition that lasts long after they return home. And so they last a lifetime, we digitise them for our teams.



Outlook Leaders



Your Leader is the beating heart of an expedition. Arguably, more important than the destination itself. They help to keep the itinerary on track, keep the team safe and motivated, support the teachers and make sure everyone is getting the most out of the experience.

Stepping back when it's safe and appropriate to do so, even allowing some 'fail and learn' opportunities.

All of our Leaders go through a rigorous selection process and hold minimum technical qualifications including a Mountain Leader Award and First Aid. They are also required to have experience of developing world travel as well as working with and developing young people.

In addition, Outlook delivers regular CPD training to our Leaders on subjects such as mental health, gender identity and altitude awareness.



Bug

One of our most experienced Leaders, Bug has led many teams since 2011, to Namibia, Peru, India Hlmayala, Finland, Morocco, Malawi and Vietnam.

35 years working as an Engineer Office in the Royal Navy means he is well accustomed to dealing with challenging situations overseas.

Why does he do it still?

"It's seeing the growth in the students; they change from timid teenagers to confident and self-assured adults during their time away"

Our Outlook Expedition leader was experienced and superb with our students - guiding them, taking expert decisions when needed and getting students to take the lead (E.g. booking accommodation, planning activities etc). They really do seem to employ the best people who "know their stuff" and know how to get the best from students. - Teacher

Pay Your Way

98% OF STUDENTS CONTRIBUTE TO THE COST OF THEIR EXPEDITION THROUGH ENTERPRISING 'PAY-YOUR-WAY' ACTIVITY.

Every year we're blown away by the entrepreneurial talents of our participants. Some go down the traditional route of taking part in sponsored events or running stalls at their school fetes and Christmas fairs.

Others use the opportunity to set up small enterprises, stage large events or approach local business for sponsorship.

Students can also raise donations easily through [easyfundraising.com](https://www.easyfundraising.com) – just by encouraging friends and family to shop online.

With **Outlook's dedicated 'Pay Your Way' programme**, we provide lots of help, support and resources to help students to reach their target.



Hope sold handmade cloth bags



Sponsored bike ride



Selling handmade crafts

LUCY'S STORY

Student Lucy utilised her artistic talents to set up a small business selling prints of her own artwork. Using some of her GCSE coursework focused on bees and a range of inspirational quotes such as Bee Different and Bee Strong, she created framed prints and sold them through her own website and at local Christmas fairs.

Using a profit and loss spreadsheet, Lucy calculated the cost of each framed print along with other associated costs. She then set her selling price to allow for a profit.

Lucy sold a total of 150 frames, earning the full cost of her expedition, and enough in addition to make a charitable donation. An inspiring and incredible effort! But not unusual for our teams.



Safety and Support



24-7 OPERATIONS ROOM

The **never-outsourced** Outlook Expeditions 'Ops Room' is the hub that keeps every expedition running smoothly and safely. Operating behind the scenes, the Ops Room team monitors trips in real time, tracks groups as they move through different locations, and provides 24 hour support to leaders and teams on the ground.

From managing logistics and responding to unexpected changes to offering immediate assistance in an emergency, our Ops Room ensures schools, students and parents can feel confident that expert support is always just a call away.

ACCREDITATIONS

Outlook Expeditions is accredited to recognised industry standards that schools trust. We are compliant with **British Standards Institution BSI 8848** for overseas adventurous activities and hold **ATOL Certificate 6679** for financial protection.

We are proud to hold the **Learning Outside the Classroom Quality Badge**, are a founding member of the **Expedition Providers' Association**, are licensed by the **Adventure Activities Licensing Authority**, and are an Approved Activity Provider for the **Duke of Edinburgh's Award**. Together, these accreditations ensure high standards of safety, safeguarding and educational value.

“ Outlook are excellent at communications and really speedy responses, especially as the Ops Room went live before our expedition. - Teacher, 2025 Expedition ”

A handful of student FAQs

How old do I have to be to travel on an Outlook Expedition?

Students need to meet the age requirements set by Outlook for each expedition, which can vary by destination and programme. Your school or Outlook trip leader will confirm the exact age range for your team, typically our trips run for students aged 14-17.

Do I need a passport?

Yes - all participants (students and adults) will need a valid passport. Make sure it's valid for the required period beyond your return date (often at least 6 months). Your programme leader will advise on exact timing. Sometimes, your nationality might mean a Visa is required too.

Do I need vaccinations?

Vaccination requirements depend on the destination. Some countries recommend or require specific vaccines for health and safety. Outlook will provide guidance on recommended vaccinations that you must check with your GP or travel clinic well before departure.

Will I have to live in a tent?

Accommodation depends on your itinerary. Some expeditions include camping, while others use lodges, guesthouses, basic hostels or community accommodation. Outlook will clarify your accommodation type on your trip info pack well before departure.

Will I be using public transport while travelling?

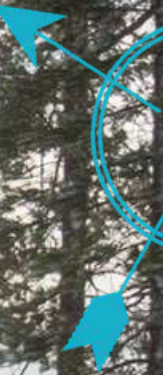
Expeditions often combine different modes of transport, sometimes including local buses, trains or minibuses, as well as private coaches. The mix depends on the destination and activities planned. Your team leader will explain transport arrangements before you go.

Is spending money included in the expedition cost?

The trip fee covers key items like accommodation, main meals, activities and in-country logistics. However, personal spending money isn't included, so you'll need a little extra for things like souvenirs, snacks, tips and small extras.

Can I speak to home while I'm away?

Communication options vary depending where you're travelling; you may be able to use phones or devices where coverage and safety allow, but expect limited connectivity in remote areas, and leaders will set guidelines to help everyone stay present and safe.



The Outlook Way

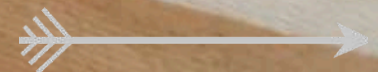
We believe that what we do and how we do it are of equal importance.

We aspire to behave in the same way that we encourage our expedition teams to behave.

Our core values are our guiding principles for working as a team and in interaction with schools, parents, suppliers, partners and expeditioners. They are embedded into every aspect of our company culture.

We call it the 'Outlook Way'.

- ✕ We have a positive growth mindset
- ✕ We work together
- ✕ We find new ways
- ✕ We believe in kindness



Meet The Outlook Team

We are a small, close knit team of passionate individuals who believe deeply in the power of travel to shape young lives. Each of us has our own reason for doing what we do, our own why, but we are united by a shared commitment to delivering purposeful, challenging and truly life-changing expeditions. For us, this is more than a job.



Hanna

Programme Manager

Our schools are in the safest of hands with Hanna, leading her school teams through the Outlook Programme



Stacy

Senior Programme Manager

Looking after our schools from launch to landing, relentlessly pushing the programme boundaries



David

Commercial Director

Jack of all trades, still master of none, still learning and meanwhile leads the commercial team



Rebecca

Sales Operations Manager

The font of all of knowledge in the business, and does love a sale



Joe

School Expedition Consultant - South

In schools more than at his desk, Joe loves the old fashioned face-to-face with parents, students and teachers



Georgie

Customer Service Executive

The newest member of our team, Georgie answers all your questions, from kit to passports, from bugs to flight timings



Emily

School Expedition Consultant - North

Went on exped. with a school team to Finland last year, didn't want to come home - loves expeditions



Beth

Senior Planning Manager

Lives for finding new destinations and creating itineraries that engage and inspire our teams



Julia

School Expedition Consultant - Central

Expert snowboarder and a depth of knowledge about expeditions too, shares that passion with schools



Jen

Operations Director

Knows the expedition game inside out, Jen makes sure expeditions are safe, developmental and fun



Will

Wellbeing and Ops Manager

Passionate about the wellbeing of our teams, and ensuring that Outlook remains the most inclusive expedition company



Nigel

Owner / Director

Industry veteran, knows a lot, obsessed about the importance of learning outside the classroom



Bethan

Planning Manager

Plans amazing itineraries for our teams, loves the challenge of a last minute change!



Bryn

Logistics Manager / Course Director

Been everywhere, survived. Brings his expertise and experience to the team and all of our Leaders



Toni

Flights Manager

Gets our teams to and from destination, whilst delays, detours and disruptions are managed quietly in the background,



Janet

Financial Co-ordinator

Pays our lovely partners in far-flung lands, and keeps the numbers in order too



Dawn

Leader Manager

A leader herself, Dawn is committed to placing the right leader with the right school, at the right time



Seth

VP, International Business Dev

Has led thousands of participants over the last 20 years across the globe, now forging new global partnerships

What's Included?

- ✕ An Outlook team T-Shirt
- ✕ International Flights
- ✕ Comprehensive overseas medical insurance
- ✕ All overseas transport
- ✕ All food and accommodation
- ✕ All activities including any entrance fees
- ✕ A highly qualified and experienced Expedition Leader supported by an Assistant Leader
- ✕ 24-7 support from our UK-based Operations Room
- ✕ Access to the full Outlook Programme
- ✕ A license to the renowned 'Leader In Me' online personal development course



Payment Guide

A deposit is necessary to secure your place.

The balance may be made by equal monthly payments or in 3 larger staged payments, with final payment for both required no later than 2 months prior to travel.

Refer to our Terms and Conditions for cancellation charges.

If there are insufficient expeditioners for the expedition to proceed, Outlook reserve the right to cancel, and any payments, including the deposit would be refunded.

What's Excluded?

- ✕ Cancellation and personal belongings insurance
- ✕ Transport to and from the UK departure airport
- ✕ Personal equipment (e.g. rucksack, walking boots, waterproof clothing)
- ✕ Spending money for gifts/souvenirs
- ✕ Inoculations, prophylaxis and personal medicines
- ✕ Visas and passports



Nothing Worth Doing Is Ever Easy




www.outlookexpeditions.com

CONTACT US

PHONE | 01248 672 760

EMAIL | customer.service@outlookexpeditions.com

ONLINE | www.outlookexpeditions.com

FACEBOOK | [@outlookexpeditions](https://www.facebook.com/outlookexpeditions)

INSTAGRAM | [@outlookexpeds](https://www.instagram.com/outlookexpeds)

ACCREDITATIONS

BSI 8848 Compliance: British Standards Institution spec. for adventurous activities outside the UK

ATOL Certificate 6679: Financial protection for all flights and trips booked through Outlook

Learning Outside the Classroom (LOtC) Quality Badge: Independently assessed for effective risk management & educational value

Expedition Providers' Association (EPA): Founding & full member, promoting safety and quality in overseas expeditions

Adventure Activities Licensing Authority (AALA): Licensed to provide outdoor adventure activities to under-18s in the UK

Approved Activity Provider (AAP) for the Duke of Edinburgh's Award